

East Post Road Bridge Over Indian Creek Replacement

Public Information Meeting
October 18, 2006

Please:

- Fill Out Sign-in Sheet
- Take a Comment Form



1

Introductions

City Project Manager
Ken DeKeyser

Consultant Project Team
Bob Bang, PE
Bob Tobin, PE
Adrian Holmes, PE
Bill Troe, AICP



2

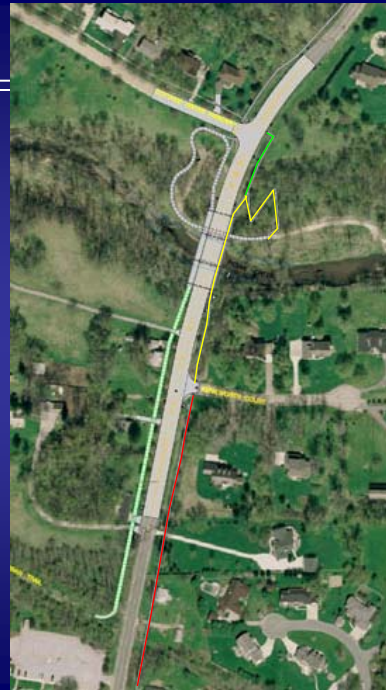
Information Meeting Agenda

- Welcome/Introductions
- Meeting Purpose:
 - Respond to July 2006 Public Meeting Comments
 - Answer Current Questions
- Next Steps
- Questions/Answers



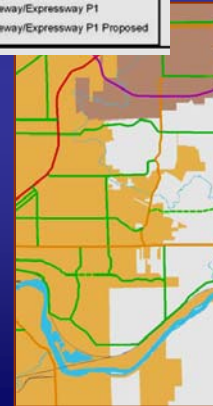
Project Overview

- Bridge Replacement over Indian Creek
- Includes Portion of East Post Road to North and South
- Accommodate Motor Vehicles, Pedestrians, Bicycles
- Maintain Trail Connection (After Construction)



Functional Classification

- Developed as Part of Regional Transportation Planning Process/ Policy
- Classified as Major Arterial
- Classification is Based on Role/ Characteristics:
 - How Continuous
 - Through Versus Local Traffic
 - Volume
 - Limit Number of Driveways
 - 1-2 Mile Spacing

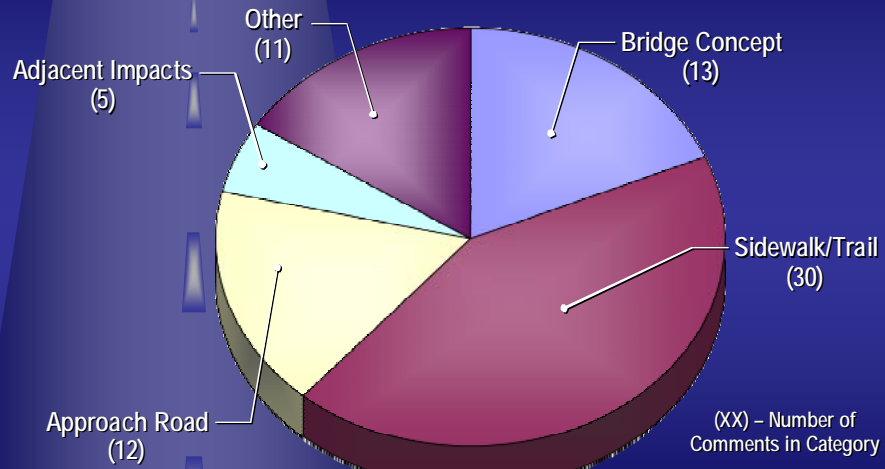


Recent City Bridge Construction Lessons Learned

- 5 Foot Sidewalk Too Narrow – Need Shy Distance – Wall and Others
- Think Aesthetics - Finished Concrete Surfaces and Decorative Railings
- Maintenance Access – Prefer Under Bridge:
 - Allows Grade-separated Pedestrian Crossing
- Concrete - Less Maintenance (No Painting)
- Assume 6 Months (Minimum) for Construction:
 - Improves Number of Competitive Bids



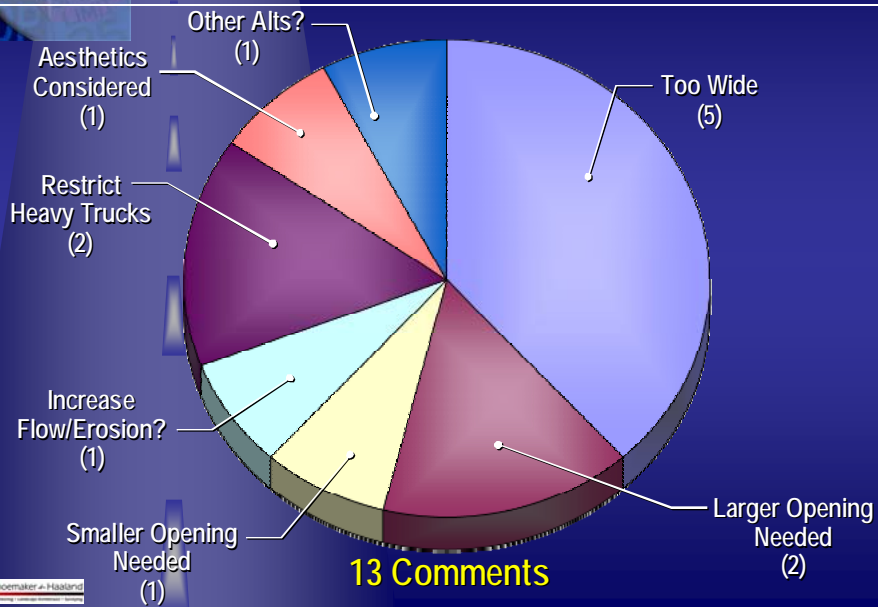
July Public Meeting Comment Summary



71 Comments on 18 Forms

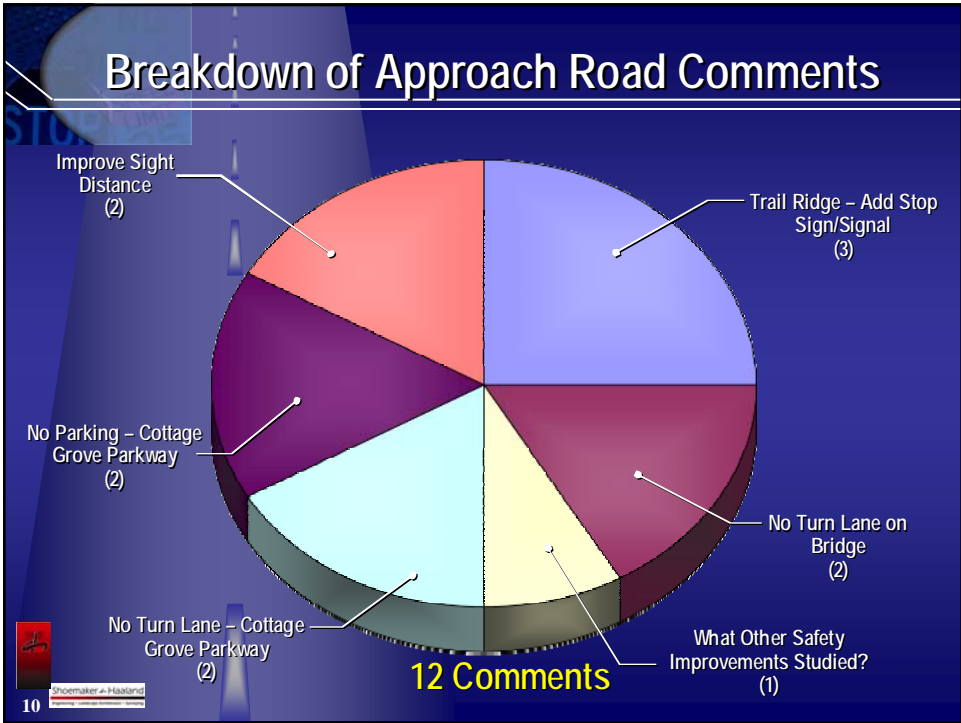
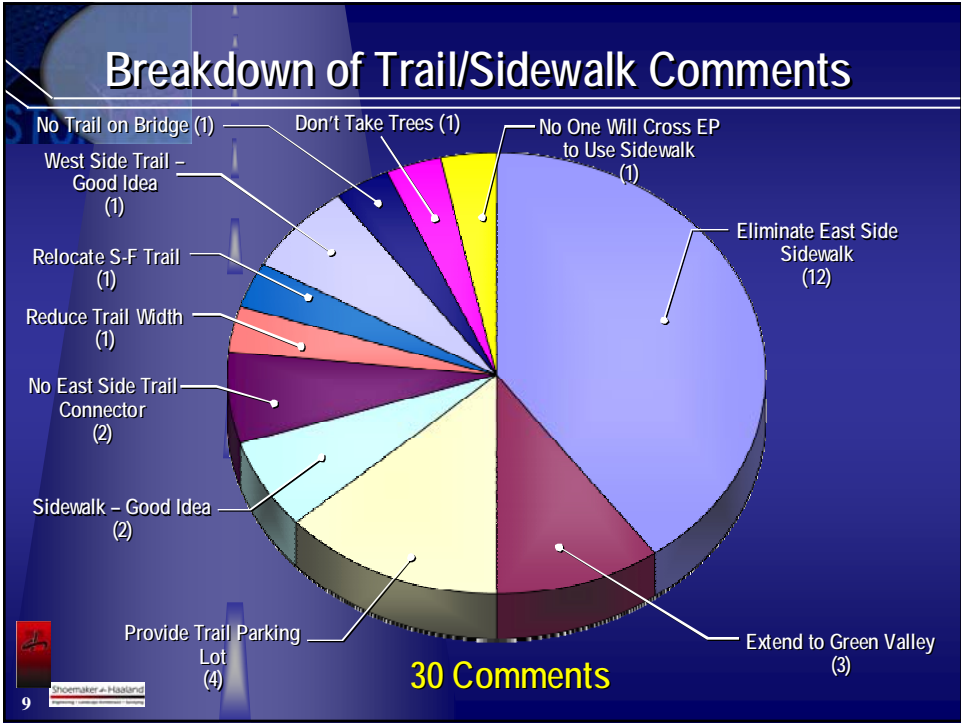


Breakdown of Bridge Comments

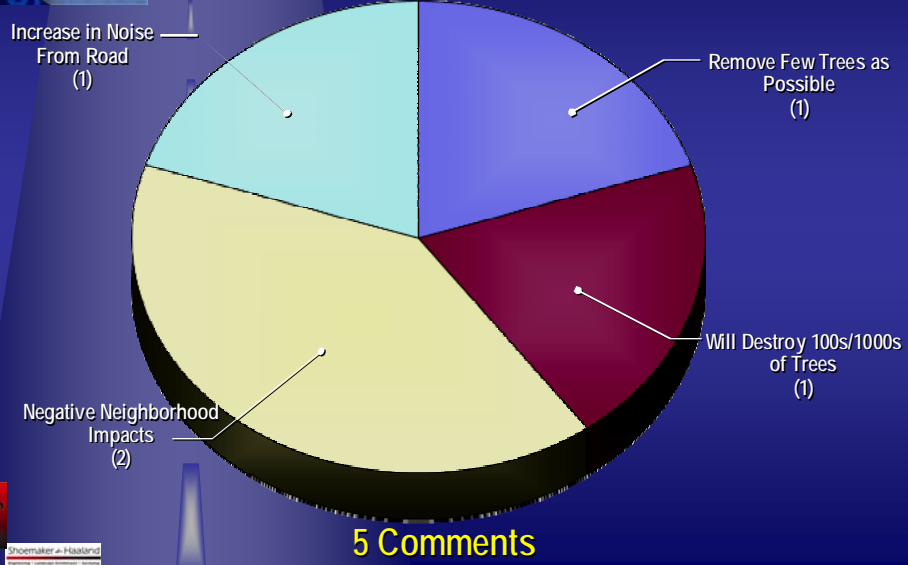


13 Comments



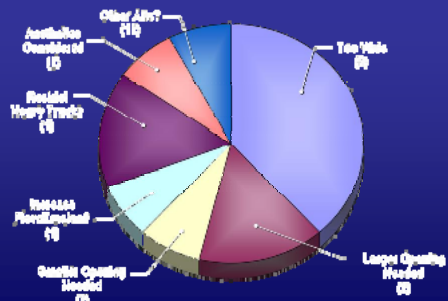


Breakdown of Adjacent Impacts Comments



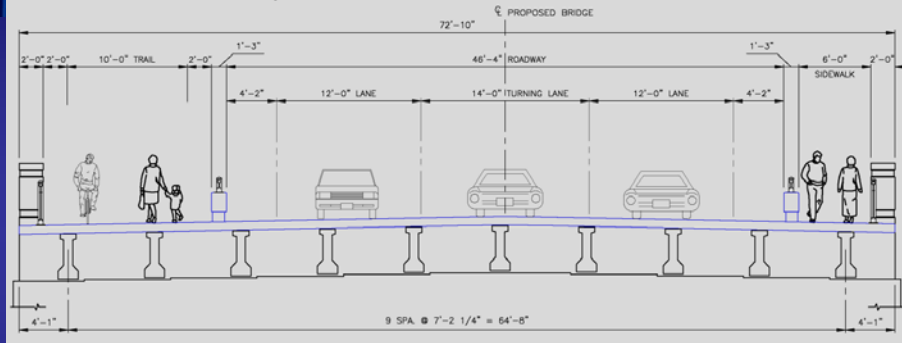
11 Shoemaker + Haaland

Bridge Concept



12 Shoemaker + Haaland

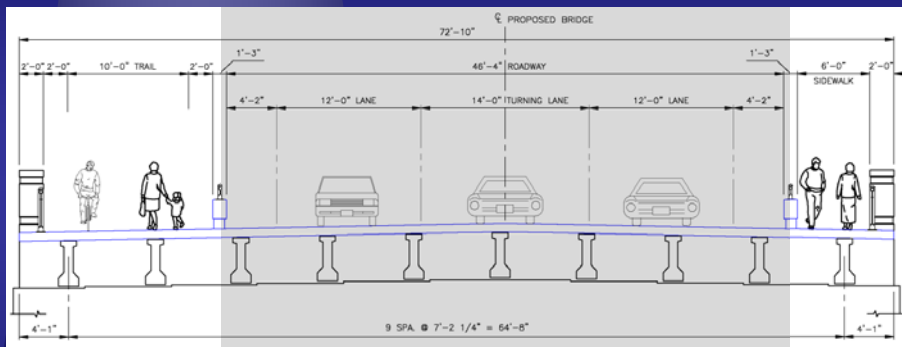
Bridge Components to Be Discussed Individually



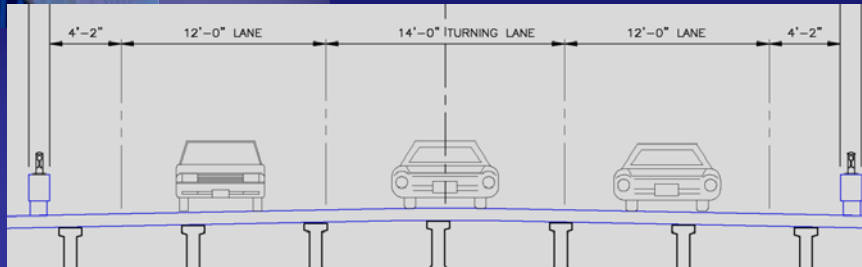
- Four Functional Elements:
 - Trail
 - Through Lanes
 - Left Turn Lane
 - Sidewalk



Concept Bridge Cross Section



Concept Bridge Cross Section



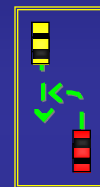
- All Dimensions Consistent with City/County/ State Design Policy
- Shoulders – Safety Element: Breakdowns/ "Clear" Zone /Short-term Snow Storage
- Wider Left Turn Lane – Shy Distance



Left Turn Lane



- Why?:
 - Safety (20-28% Reduction in Crashes)
 - Operations
- Need For Turn Lane – Through Volume/ Opposite Left Turn Volume and Crashes
- Current Left Turns at Cottage Grove:
 - 77 AM Peak Hour
 - 39 PM Peak Hour
- Current/Future Volumes Meet Threshold?
 - Cottage Grove Parkway: Yes/Yes
 - Kenilworth Court: No/No



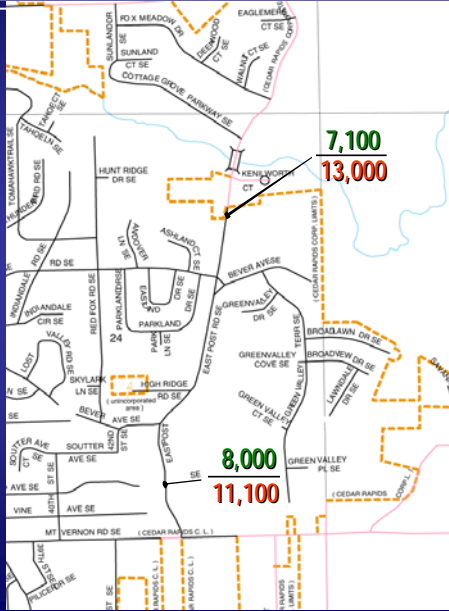
Daily Traffic (Current and 2040)

- Current/Future: Reflects 3-Lane Corridor
- Expansion Not in MPO Long Range Plan:
 - Must be in Plan if Expect to Widen
 - Not in Plan – Not Expecting to Widen

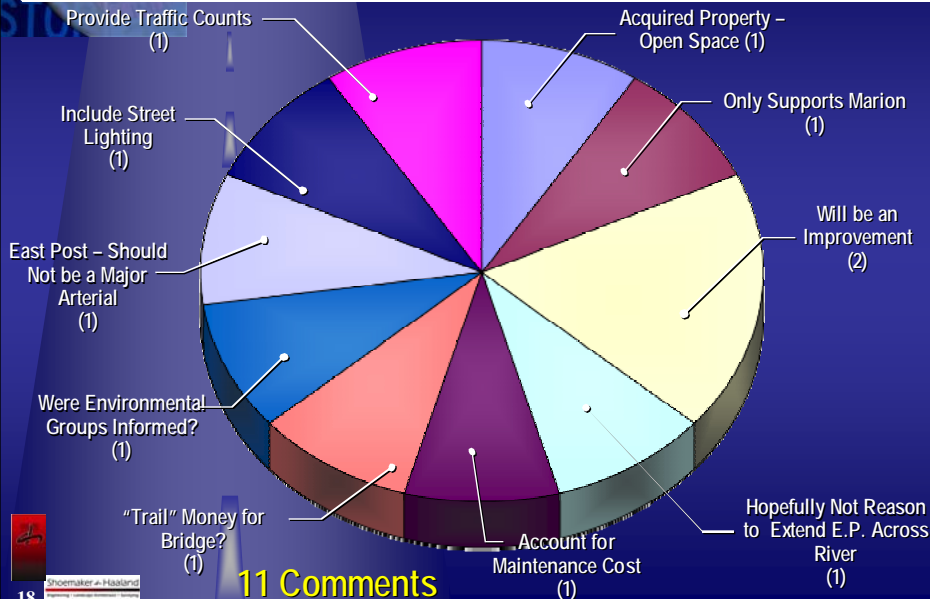


XXXX – Current Daily Traffic
 XXXX – Forecasted 2040 Daily Traffic

17



Breakdown of "Other" Comments



18

Historic Crash Information

Crashes by Type	Year			TOTAL
	2003	2004	2005	
Non-Collision	5	7	3	15
Head On	0	1	2	3
Rearend	6	0	4	10
Angle-Oncoming Left Turn	0	1	1	2
Broadside	4	0	2	6
Sideswipe - Same Direction	2	0	0	2
Sideswipe - Opposite Direction	0	0	1	1
Unknown	0	0	0	0
Not Reported	0	3	2	5
TOTAL	17	12	15	44

Based on City of Cedar Rapids Crash Records: East Post Road – Mt. Vernon Road to North of Cottage Grove Avenue
Dollar Value of Property Damage in Period - \$197,000



Left Turn Lane

- Length:
 - Vehicle Stacking - 50 Feet
 - Slowing/Taper - 550 Feet
- Cottage Grove Parkway to Bridge: 200 Feet
- Can Fit Vehicle Stacking
- "Taper" for Slowing on Bridge
- Taper on Bridge:
 - Construction More Costly
 - Construction More Difficult
 - Maintenance More Difficult

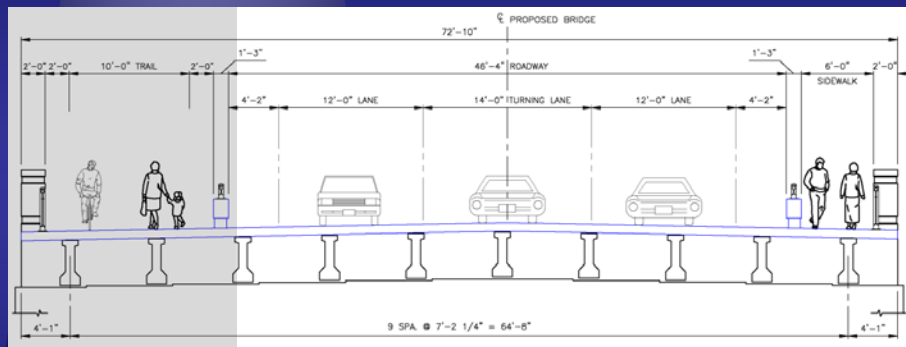


Left Turn Lane

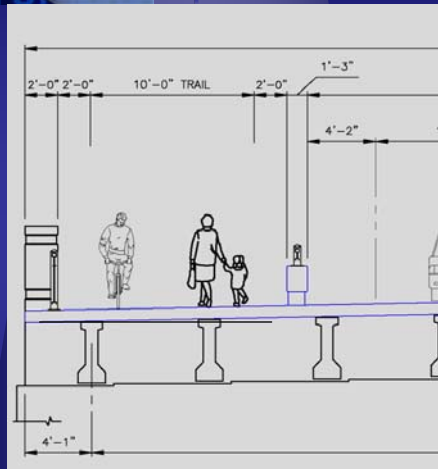
- Option: Extend Left Turn Lane Through Bridge
- Taper South of Bridge
- Kenilworth Court: 230 Feet from Bridge
- Can Provide Turn Lane Economically – Improve Safety



West Side Trail Width



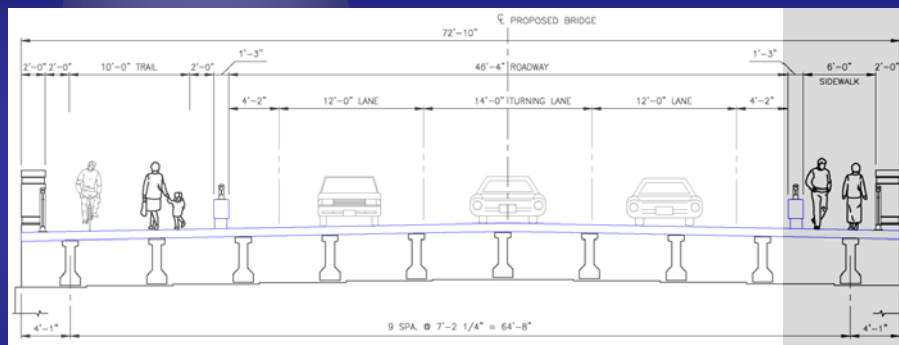
West Side Trail - Description



- Total Width: 14 Feet
- "Useable" Width: 10 Feet
- 2 Feet of "Shy" Distance Each Side:
 - Safety
 - Comfort for Users
- Consistent with City/County/State Design Policies

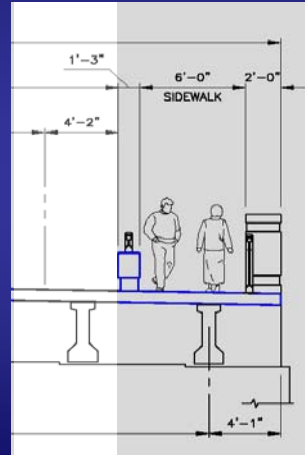


Concept Bridge Cross Section

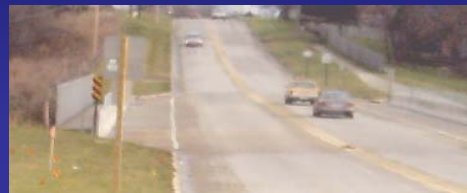


Sidewalk Overview

- Useable Width: 5 Feet
- ½ Foot Shy on Either Side
- Consistent with City/County/ State Design Policy

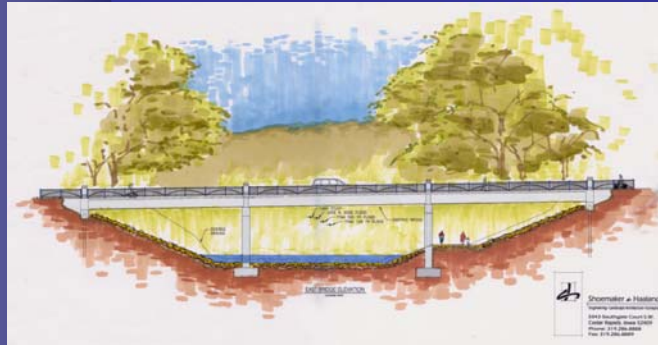


Boyson Road Bridge (Examples)



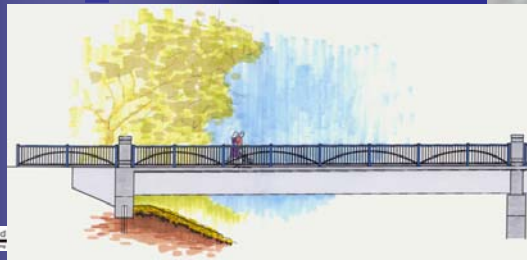
Indian Creek Flow Concerns (Hydraulics)

- Assumptions, Methods, Results Consistent with Agency Requirements:
 - Corps of Engineers
 - Iowa Dept. of Natural Resources
- No Adverse Upstream or Downstream Impacts/ Effects



Bridge Aesthetics

- Major Components:
 - Bridge Rail
 - Retaining Wall
 - Road/Trail/Sidewalk Surface
- Present Alternatives to Council for Consideration - With Costs

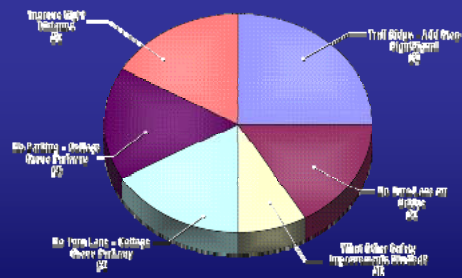


Retaining Wall Aesthetics

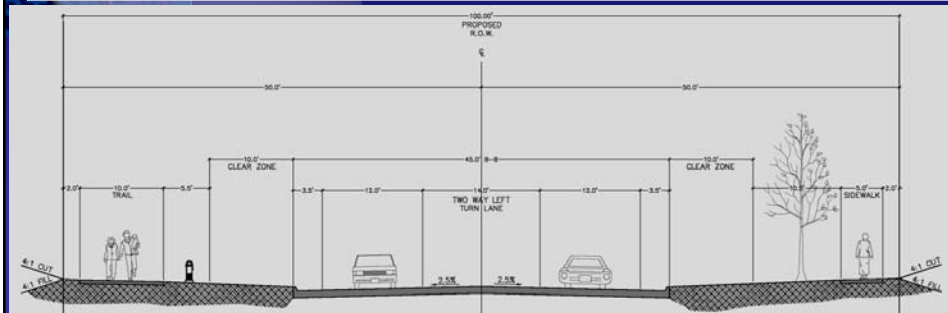
- Major Components:
 - Bridge Rail
 - Retaining Wall
 - Road/Trail/Sidewalk Surface
- Present Alternatives to Council for Consideration With Costs



Approach Roadway



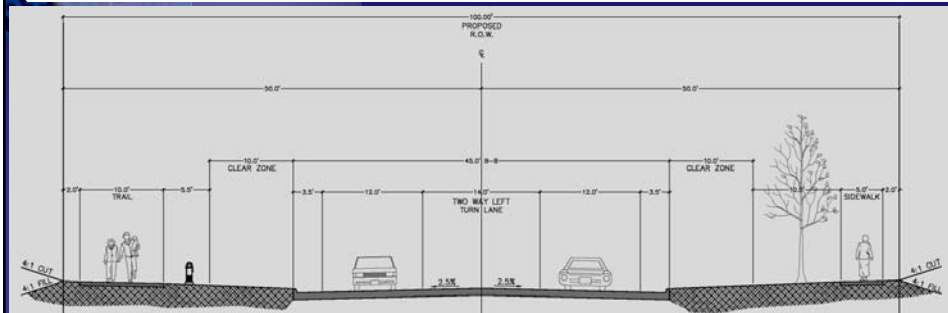
Concept Roadway Cross Section



- Same Four Functional Elements as Bridge
- Consistent with City/County/State Design Policy
- Arterial Policy – Sidewalk Both Side



Concept Roadway Cross Section



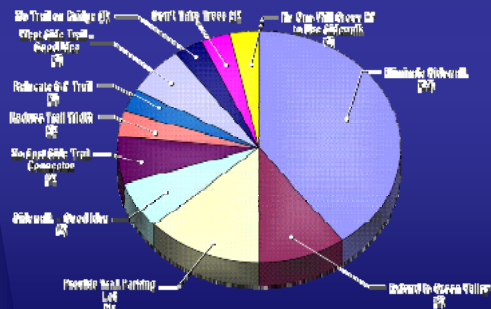
- Adjusted Grading to Reduce Impacts
- Will Replace Trees



Trail Ridge Road

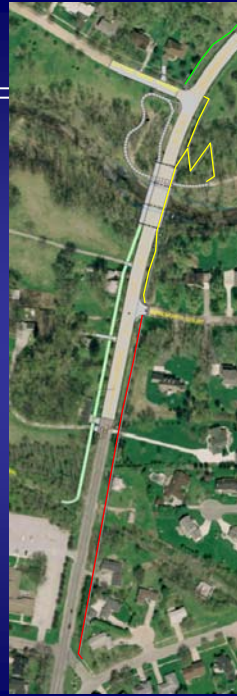
- Reviewed Traffic Volumes Relative to Signal Warrants and Turn Lane Warrants
- Action at Trail Ridge Road/East Post Would not Impact the Bridge Project

Sidewalk/Trail

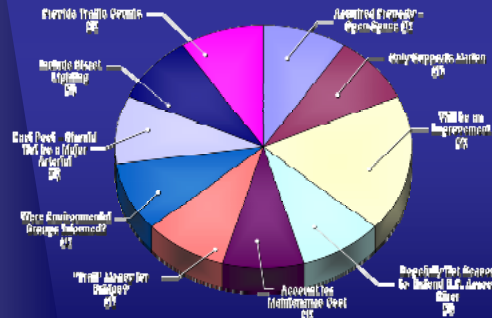


Responses to Comments

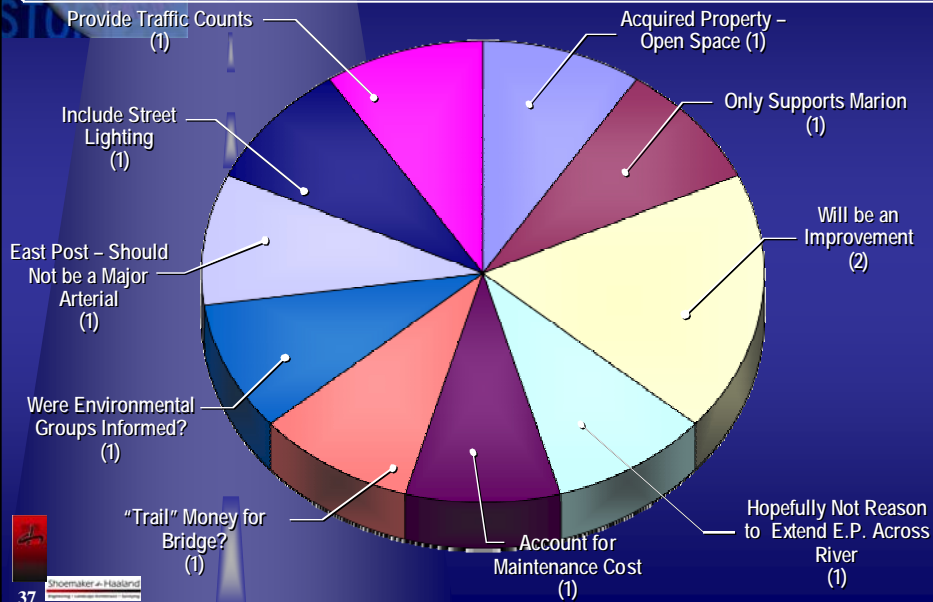
- East Side Sidewalk: Ultimate Concept Connects Green Valley Neighborhood with S-F Trail (200 + Homes)
- Cottage Grove Parkway to Fox Meadow Drive – Reflects Request at 2nd Public Meeting
- Reduces Need to Cross East Post Road – Safety Improvement



Other Category



Breakdown of "Other" Category



Next Steps

- Address Questions from Tonight
- Council Discussion (Nov/Dec 2006):
 - Follow Up from Tonight's Meeting
 - What (If Any) Changes are Needed
- Based on Council Decision - Determine Next Steps
 - Revise Design
 - Proceed with Letting

Thanks for Coming Out

Questions??????

Bob Bang
Shoemaker-Haaland
286-8888

E-mail: eastpostbridge@urscorp.com

Project Website: www.eastpostbridge.com

